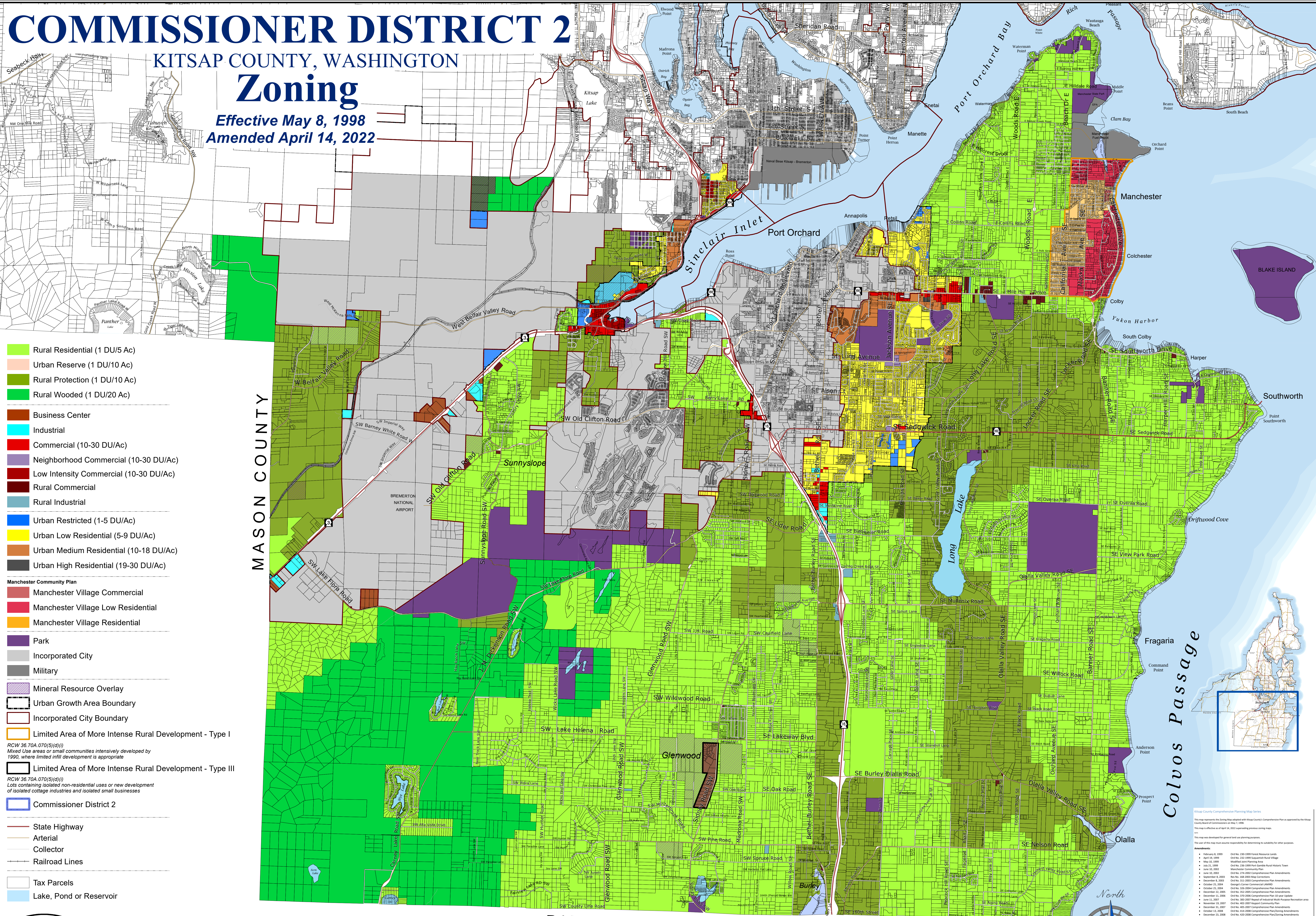


COMMISSIONER DISTRICT 2

KITSAP COUNTY, WASHINGTON

Zoning

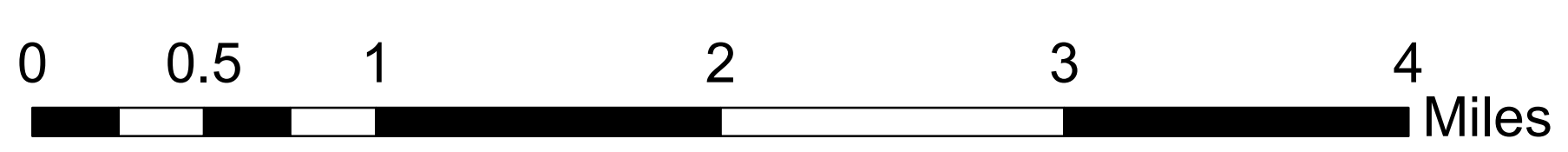
Effective May 8, 1998
Amended April 14, 2022



- Rural Residential (1 DU/5 Ac)
 - Urban Reserve (1 DU/10 Ac)
 - Rural Protection (1 DU/10 Ac)
 - Rural Wooded (1 DU/20 Ac)
 - Business Center
 - Industrial
 - Commercial (10-30 DU/Ac)
 - Neighborhood Commercial (10-30 DU/Ac)
 - Low Intensity Commercial (10-30 DU/Ac)
 - Rural Commercial
 - Rural Industrial
 - Urban Restricted (1-5 DU/Ac)
 - Urban Low Residential (5-9 DU/Ac)
 - Urban Medium Residential (10-18 DU/Ac)
 - Urban High Residential (19-30 DU/Ac)
- Manchester Community Plan**
- Manchester Village Commercial
 - Manchester Village Low Residential
 - Manchester Village Residential
- Park
 - Incorporated City
 - Military
 - Mineral Resource Overlay
 - Urban Growth Area Boundary
 - Incorporated City Boundary
 - Limited Area of More Intense Rural Development - Type I
 - Limited Area of More Intense Rural Development - Type III
 - Commissioner District 2
 - State Highway
 - Arterial
 - Collector
 - Railroad Lines
 - Tax Parcels
 - Lake, Pond or Reservoir



Kitsap County Department of Community Development
614 Division Street, MS-36, Port Orchard, Washington 98366
Kitsap One - (360) 337-5777 * <https://www.kitsapgov.com/>



Kitsap County Comprehensive Planning Map Series

This map represents the Zoning Map adopted with Kitsap County's Comprehensive Plan and approved by the Kitsap County Board of Commissioners on May 2, 2006.
This map is effective as of April 14, 2022 superseding previous zoning maps.
This map was developed for general land use planning purposes.
The user of this map must assume responsibility for determining its suitability for other purposes.

Effective Date	Ord. No.	Ord. Title
February 8, 1999	Ord. No. 230	1999 Forest Resource Limits
April 10, 1999	Ord. No. 232	1999 Saginaw Rural Village
May 18, 1999	Ord. No. 233	1999 Park Point Rural Village
July 21, 1999	Ord. No. 236	1999 Park Point Rural Village
June 30, 2002	Ord. No. 274	2002 Comprehensive Plan Amendments
September 16, 2003	Ord. No. 348	2003 Comprehensive Plan Amendments
December 8, 2003	Ord. No. 355	2003 Comprehensive Plan Amendments
December 23, 2003	Ord. No. 360	2003 Comprehensive Plan Amendments
October 23, 2004	Ord. No. 376	2004 Comprehensive Plan Amendments
December 23, 2005	Ord. No. 392	2005 Comprehensive Plan Amendments
December 15, 2007	Ord. No. 402	2007 Comprehensive Plan Amendments
December 15, 2008	Ord. No. 414	2008 Comprehensive Plan Amendments
December 23, 2008	Ord. No. 420	2008 Comprehensive Plan Amendments
December 14, 2009	Ord. No. 445	2009 Comprehensive Plan Amendments
December 15, 2009	Ord. No. 446	2009 Comprehensive Plan Amendments
August 11, 2012	Ord. No. 492	2012 Urban Growth Area Amendment
December 13, 2012	Ord. No. 498	2012 Comprehensive Plan Amendments
January 15, 2014	Ord. No. 522	2014 Comprehensive Plan
June 30, 2016	Ord. No. 534	2016 Comprehensive Plan 12-year update
March 12, 2018	Ord. No. 552	2018 Resource Inventory
December 10, 2018	Ord. No. 560	2018 Comprehensive Plan Amendments
December 10, 2019	Ord. No. 567	2019 Comprehensive Plan Amendments - Renewal
April 27, 2020	Ord. No. 587	2020 Comprehensive Plan Amendments
November 23, 2021	Ord. No. 609	2021 Comprehensive Plan Amendments
January 16, 2022	Ord. No. 612	2022 Comprehensive Plan Amendments
April 14, 2022	Ord. No. 613	2022 Comprehensive Plan Amendments